



GMT MONTHLY MEMBERSHIP PROGRESS REPORT

Results as of: 3/31/2020

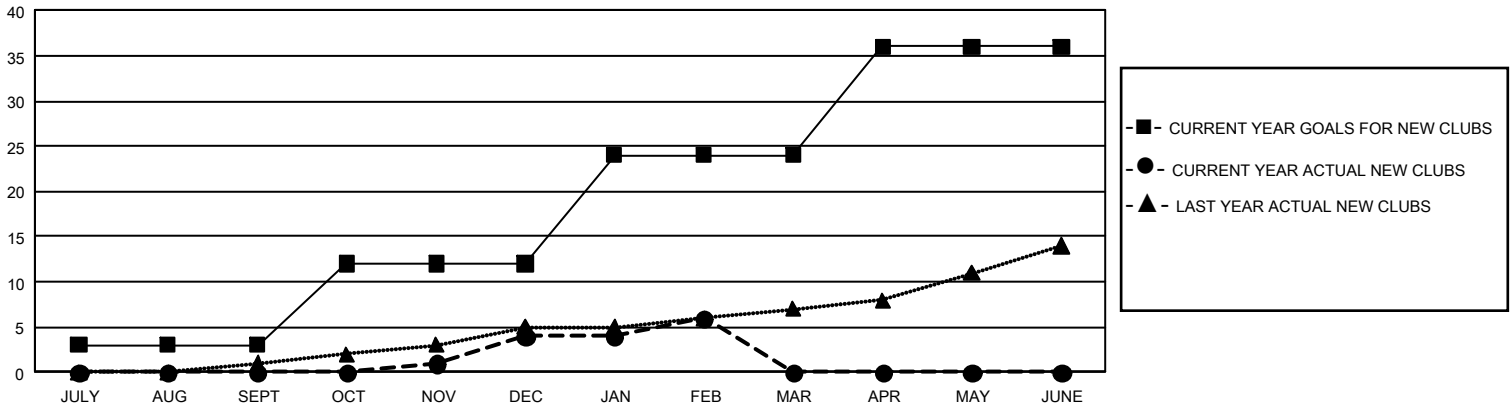
GMT Constitutional Area 4, Group D

GMT: OPEN

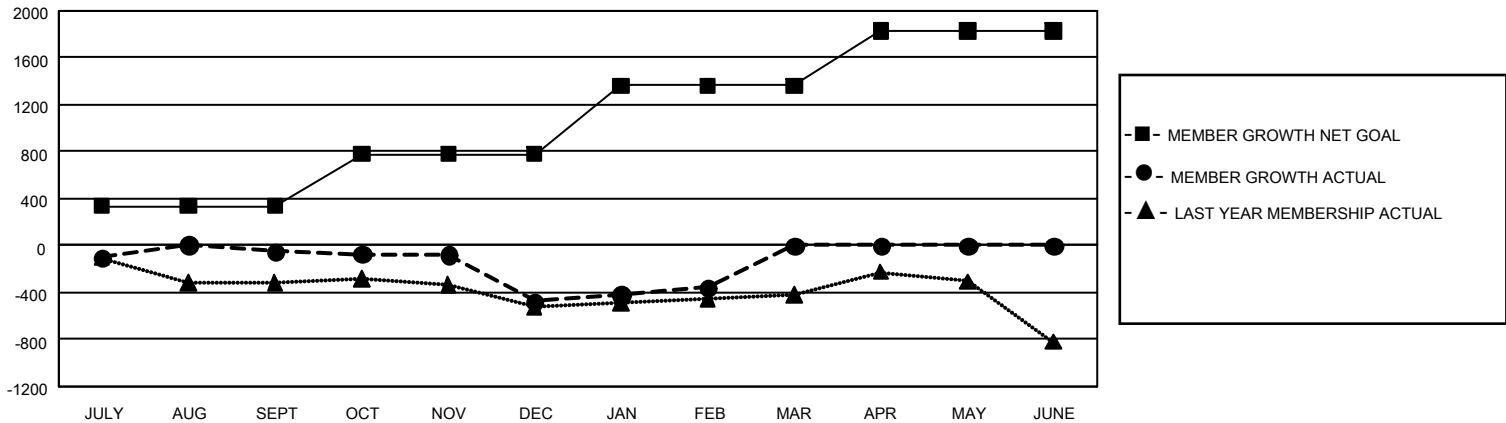
REPORT DOES NOT INCLUDE CLUBS IN UNDISTRICTED AREAS.

| Clubs | | | | Members | | | |
|-----------------------|---------------|-----------|---------------|-----------------------|------------------------|----------------------|--|
| RESULTS FOR 2019-2020 | | | | RESULTS FOR 2019-2020 | | | |
| QUARTER | NEW CLUB GOAL | NEW CLUBS | DROPPED CLUBS | QUARTER | MEMBER GROWTH NET GOAL | MEMBER GROWTH ACTUAL | DROPPED MEMBERS ACTUAL (including transfers) |
| JULY/AUG/SEPT | 9 | 0 | 6 | JULY/AUG/SEPT | 1,002 | 576 | 572 |
| OCT/NOV/DEC | 27 | 4 | 9 | OCT/NOV/DEC | 1,341 | 586 | 939 |
| JAN/FEB/MAR | 36 | 2 | 10 | JAN/FEB/MAR | 1,743 | 473 | 288 |
| APR/MAY/JUNE | 36 | 0 | 0 | APR/MAY/JUNE | 1,404 | 0 | 0 |

GOALS AND ACTUAL NEW CLUBS CUMULATIVE



GOALS AND ACTUAL MEMBERS CUMULATIVE



| | | | |
|------------------------|--|---|-------------|
| DROPPED CLUBS: 0 | 0 CLUBS OF 0 ADDED 1 OR MORE NEW MEMBERS | <u>GENDER DISTRIBUTION</u> | |
| <u>DROPPED MEMBERS</u> | | MALE | 0 (100.00%) |
| DECEASED | 0 | FEMALE | 0 (100.00%) |
| CLUB CANCELLED | 0 | TOTAL FAMILY UNIT MEMBERS | 0 |
| OTHER | 0 | FAMILY MEMBERS PAYING HALF DUES | 0 |
| TOTAL | 0 | CLICK HERE FOR CUMULATIVE MEMBERSHIP DATA | |